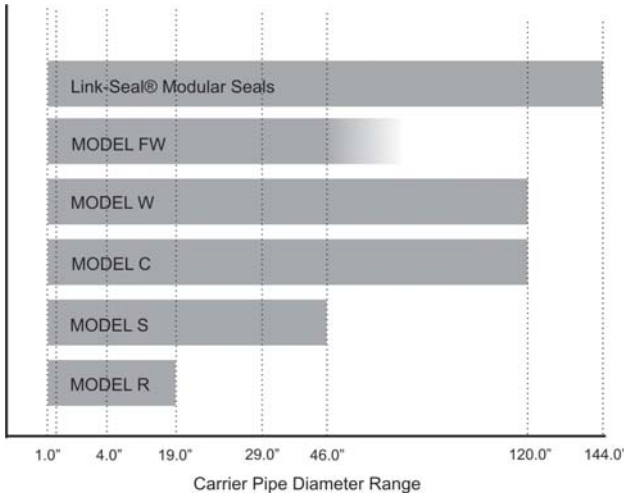


Casing End Seals

Models C and R

Casing End Seals



Material	Endseal Model					Material Specifications
	C	R	S	W	FW	
EPDM 60	X	X	X	X	*	Thickness = 1/8" (3.18mm) Color = Black Temperature = 250° F. (121° C.)
BUNA-N ¹	X			X	*	Thickness = 1/8" (3.18mm) Color = Black Temperature = 212° F. (100° C.)
NEOPRENE	X			X	*	Thickness = 1/8" (3.18mm)* Color = Black Temperature = 170° F. (77° C.)
NITRILE						X Color = Green Temperature = 210° F. (99° C.)
SILICONE						X Color = Grey Temperature = 400° F. (204° C.)
EPDM						X Color = Black Temperature = 250° F. (121° C.)

NOTES:

Standard casing end seals are designed for below grade applications. For above grade applications please contact PSI.

LS = Link-Seal® Modular Seals.

* = Contact PSI For Material Specifications.

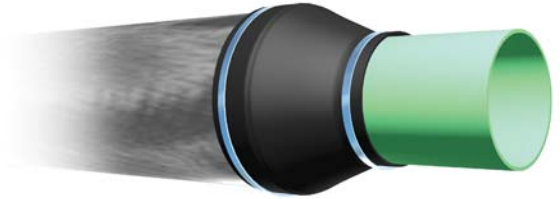
1. High grade Buna-N material available for oil/gas run off.

Model "C" End Seals (For New Installations) Water/Energy Market

Model "C" Custom Pull-on End Seals are designed to accommodate custom carrier/casing diameter combinations. They are made to customer supplied specifications so they may be used for any size casing/carrier differential. Manufactured from 1/8" thick specially compounded synthetic rubber, PSI Model "C" end seals are extremely robust, resistant to wide variations in environmental conditions while eliminating the possibility of foreign material entering the opening between carrier and casing pipes.

Benefits/Features

- Custom Made to Order
- Quick and Easy Installation
- Carrier Pipe Does Not Need To Be Centered Within Casing
- Screwdriver Is Only Tool Required for Installation
- Designed To Last for the Life of the Piping System
- Heavy Duty Stainless Steel Hose Clamps Supplied

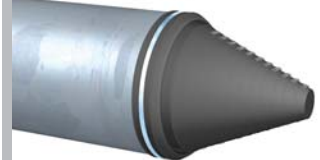
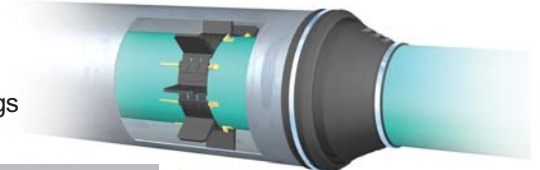


Model "R" End Seals and Night Caps (For New Installations) Water/Energy Market

Model "R" End Seals are available in five (5) different sizes to accommodate a wide range of carrier/casing diameter combinations. A unique "cone" design, with molded-in dimensions, are easily cut to size for a correct fit on the carrier pipe.

Benefits/Features

- Low storage costs, only five end seal sizes to accommodate casings from 4" (10.2cm) to 24" (61.0cm) in diameter with all applicable carrier pipe sizes
- May be easily stocked in 5 model sizes
- Quick and Easy Installation
- Manufactured from 1/8" (3.18mm) thick high quality EPDM rubber
- Casing night cap prevents entry of debris and animals during install
- Sizes are clearly printed on sleeve to simplify cutting to the correct size
- Designed to last for the life of the piping system
- Stainless steel bands for clamping both ends of end seal provided
- May be used for new installations



Five Models From Which To Choose
Select the appropriate size for your casing pipe (C) and carrier pipe (R) and choose the correct material.

Tip for Installation
Simply cut the seals at the closed end to the measured external diameter of the carrier pipe. Note: The printed sizes are marked on the end seals. Push the end seal over the outside of the casing pipe and the carrier pipe and fasten with the included stainless steel bands.

Model R EPDM - Material Specification
Material: EPDM 60
Thickness: 1/8" (3.18mm)
Color: Black
Temperature: 250° F. (121° C.)
Hardware: 304 Stainless Steel Bands with Worm Screws
See Customer Specifications

Pipeline Seal and Insulator, Inc.
5222 Collins Street, Houston, TX 77031 U.S.A.
Telephone: 713-742-0244 • Fax: 713-742-0239
Tel. Fax: 800-345-2493
www.pipeline-seal.com • info@psi.com

For Model R End Seal sizing, download Model R literature. www.pipeline-seal.com

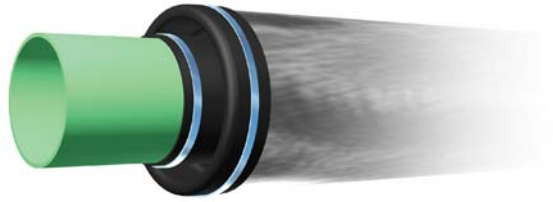
Casing End Seals

Model "S" Standard Pull-on End Seals (For New Installations) **Energy Market**

Model "S" Standard Pull-on End Seals are flexible and easily installed on Nominal Steel & IPS casing/carrier pipe combinations. PSI Model "S" end seals are extremely robust, resistant to wide variations in environmental conditions while eliminating the possibility of foreign material entering the opening between carrier and casing pipes.

Benefits/Features

- Quick and Easy Installation
- May be stocked
- Screwdriver Is Only Tool Required for Installation
- Designed To Last for the Life of the Piping System
- Heavy Duty Stainless Steel Hose Clamps Supplied.



Model "W" Wrap Around End Seals (For New and Existing Installations) **Water/Energy Market**

Model "W" Wrap Around End Seals are designed to accommodate customer supplied specifications so they may be used for any size casing/carrier differential. PSI Model "W" end seals are extremely robust, resistant to wide variations in environmental conditions while eliminating the possibility of foreign material entering the opening between carrier and casing pipes.

Benefits/Features

- Custom Made to Order
- Quick and Easy Installation
- Carrier Pipe Does Not Need To Be Centered Within Casing
- Can Be Installed on Existing Casing Installations
- Screwdriver Is Only Tool Required for Installation
- Designed To Last for the Life of the Piping System
- Heavy Duty Stainless Steel Hose Clamps Supplied
- Self-Curing Seam - Simply Remove Plastic Backing and Press Together



Model "FW" Fire Resistant End Seals (For New and Existing Installations) **Energy Market**

Model "FW" Fire Resistant End Seals have been developed for applications identified as fire prone areas such as tank farms or pipes passing through fire walls. They are ordered to customer supplied specifications so they may be used for any size casing/carrier differential. These seals are excellent for eliminating the possibility of foreign material entering the opening between carrier and casing pipes.

Benefits/Features

- Custom Made to Order
- Quick and Easy Installation
- Carrier Pipe Does Not Need To Be Centered Within Casing
- Screwdriver Is Only Tool Required for Installation
- Designed To Last for the Life of the Piping System
- Heavy Duty Hose Clamps Supplied



**Standard casing end seals are designed for below grade applications.
For above grade applications please contact PSI.**