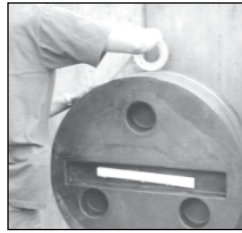




1. Locate center line where the hole is desired. This location will be used as a guide for the threaded centering assist rod.

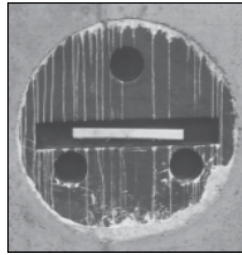


7. Wrap each seam with one wrap of 2" wide tape to bridge any possible gaps.

NOTE: Tape not included. Finish insatlling concrete forms and pour concrete.



2. A 2x4 wood nailer is included. Fasten it along with the threaded rod directly to the concrete form. This provides support and helps center the complete Cell-Cast® disk assembly.



8. After wall cures, wall forms are removed. The Cell-Cast® disk assembly is now ready for removal.



3. Slide the first Cell-Cast® disk over the *threaded rod.

NOTE: Use only 1 threaded rod for equal distribution. More than one rod could take disks out of shape.



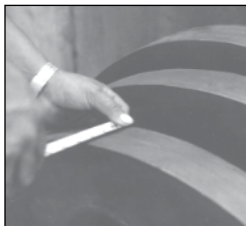
9. Chip excess concrete from the edge of the Cell-Cast® disk assembly and wall.



4. Secure the edges of the cell to the form using the provided steel spikes.



10. Remove disks by breaking out the entire assembly.



5. Additional disks are interlocked to accommodate finished wall thickness. Verify thickness is the same as wall.



11. Inspect the installation. A smooth opening is important for a proper Link-Seal® modular seal installation. Repair voids and grind smooth any ridges.



6. Guide the 1" wood block over the threaded rod and secure the assembly with the wing nut provided.

If you should have questions using the techniques provided, Call GPT at 713-747-6948 or 800-423-2410.

NOTE: For walls greater than 16", please contact GPT.

***NOTE:** Threaded rod must be requested when ordered. Make sure TRA is added to the end of the ordering code.