



Registered ISO 9001:2000

Pipeline Seal & Insulator, Inc.

6525 Goforth Street

Houston, Texas 77021 U.S.A.

Telephone: 713-747-6948, Facsimile: 713-747-6029

e-mail: info@psipsi.com, Website: www.pipeline Seal.com

PSI End Seal Material Specifications/Sizing

Model S "Pull-On" End Seal

Material:..... EPDM 60 under 12" **SBR over 12"**
Thickness:..... 1/8"
Color:.....(Black)
Temperature:..... 250°F **180°F**
Hardware:.....304 Stainless Steel Bands w/worm screws
Sizing:.....Consult Factory



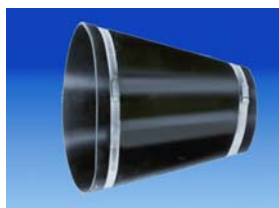
PSI Model "S" End Seal

Note: Standard casing end seals are designed for below grade use. For above grade applications, please contact PSI.

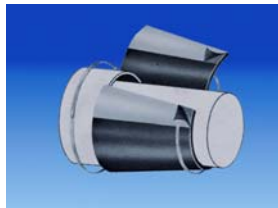
Model C "Custom Pull-On" and W "Wrap Around" End Seals

Material:..... EPDM 60
Thickness:..... 1/8"
Color:.....(Black)
Temperature:..... 250°F
Hardware:.....304 Stainless Steel Bands w/worm screws
Sizing:.....Custom per application

Material:..... Buna-N (Oil/Gas) or **Neoprene (Water)**
Thickness:..... 1/8"
Color:.....(Black)
Temperature:..... 212°F.....**170°F**
Hardware:.....304 Stainless Steel Bands w/worm screws
Sizing:.....Custom per application



PSI Model "C" End Seal



PSI Model "W" End Seal

Note: Standard casing end seals are designed for below grade use. For above grade applications, please contact PSI.

Effective 10/08

PSI Registered Trademarks

LineBacker® Sealing Gaskets Link-Seal® Modular Seals
Ranger II® Casing Spacers Century-Line® Sleeves
ElectroStop™ Isolating Fittings Cell-Cast® Disks
GasketSeal® Sealing Gaskets Riser-Wrap® Heat Shrink