



# POWER PLANT SUPPLY

P: 416-752-3339  
F: 866-814-6784



- **Link-Seal®** Modular Seals - Pipe Penetration Withstands 20 PSI
- Silicone Seal, Low Durometer, NSF61, Nitrile Models for all applications
- For penetrations from .5" to 120" (Custom Solutions also available)



- Lightweight Century-Line® **Wall Sleeves** 2" - 25" diameter, 1/8 weight of steel
- Easy Installation; Resists Water Migration, Non-Conductive
- Customised Metallic Wall Sleeves are also available

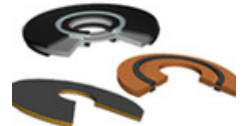


Casing Spacers

- **Non-Metallic Ranger-II Casing Spacers for low initial cost**
- **Steel Casing Spacers** also available for maximum strength and toughness
- Casing End-Seals for all types of sealing requirements



- Lamons® **Flange Isolation Kits** (ISOMATE, ISOGUARD, DEFENDER, FS, RG)
- Metallic & Non-Metallic Gaskets Available
- All accessories (ie. Fasteners, Washers, Thread Lubricant also available)



- Lansas® **Complete Line of Pipe Plugs**
- Applications include: Pipe Testing, blocking & bypassing flow in pipelines
- Joint Testers, High Pressure Plugs, Air Testing, Manhole Vacuum Testing



- Boa Tape® for sealing joints against **ground water infiltration**
- Riser Wrap® two-layer system for corrosion/sealing protection on pipelines & manholes
- Fibertec® Resistant Glass Fiber for waterproof mechanical protection for pipe coating



- Frank® **Puddle Flanges**
- Suitable for standard Steel, Plastic, Concrete & Cast Iron from 20mm and up
- Easy to install, cost-effective alternative to conventional sealing systems



- WaPro® **Anti-Flood & Total Water Control Products**
- Check valves, back flow valves, flow control devices, pinch valves
- Customized Products can be made to order in PE, PP, and SS



- Proco® **Expansion Joints for Piping/Ducting Systems**
- Cost-effective Rubber **Duckbill Check Valves** for sewage treatment plants, outfalls, and tidal operations
- Global applications used all over the world





# POWER PLANT SUPPLY

P: 416-752-3339  
F: 866-814-6784



- MagnaDrive® replaces physical connection between motor & load with air gap
- **Couplings** reduce chance of premature machine failure as a result of vibration transfer
- Advantages include: Simple Installation, Rapid Restart, Increased Equipment Life, **Up to 70% Energy Savings**



- ZMesh® for electric radiant heat **ice dam melting** and **deck deicing**
- Unique, durable bronze fabric heating element can be nailed and stabled through into non-conductive materials
- Industry-Leading 25 year warranty; listed to UL and CSA Standards



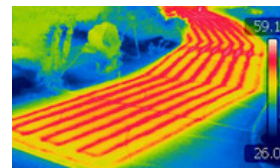
- Tuff Cable® is utilised for **long-term automated snow melting applications** for driveways, walkways, and other surfaces
- Industry-Leading 25-year warranty; listed to UL and CSA Standards
- 5-12 Watts per lineal foot



- GutterMelt® SR (Self-Regulating) **Heat Trace Cable** for industrial and residential projects
- 10 year warranty; listed to UL and CSA Standards
- 5-24 watts per lineal foot



- Hott-Wire® MI (Mineral Isolated) **Snow Melting Cable** for driveways, walkways, car washes, stairs, access ramps, loading docks, bridges, etc.
- 10 year warranty; listed to UL and CSA Standards
- 11.5-40 Watts per lineal foot, 120V - 208 / 240 / 277 - 480V



- Powerblanket® **Snow-Melting Safety Mats**
- **Expediting Curing/Ground Thawing Processes** (Concrete, Epoxy) via Heated Blankets
- Protection for **temperature-sensitive products and materials** (totes, gas cylinders, propane tanks and much more)



CALL: 416-752-3339

EMAIL: [CENTRAL@POWERPLANTSUPPLYCO.COM](mailto:CENTRAL@POWERPLANTSUPPLYCO.COM)